

**PAL**  
REAL GROUP

**वैदिक** *Villaage*  
DISCOVER THE SERENITY OF VAIDIK LIVING

**वैदिक** *Villaage*  
DISCOVER THE SERENITY OF VAIDIK LIFE

# The new **LIFE** in town

Location • Investment • Freedom • Environment

\*Images and pictures are conceptual and actual can be differ from these images\*

**Vaidic Villaage | Residential Plots & Cottages Near Jewar Airport, Yamuna Expressway Noida**



**Investment**  
For greater returns  
an upgraded lifestyle  
sustainable living



## About Builder

PAL REAL GROUP was founded in 2000 in Jaipur. Since then we have done tremendous Projects in Rajasthan & Mainly in Jaipur. Our Projects & our constructions are done in such a way that it can be afforded by everyone. All of our projects are surrounded by Ring Road, IT Corridor, Terminal Market, Bus Terminal & we are giving facilities like Parks, Hospitals, Educational Institutions, Club houses, Multi-Storey Buildings, Community Hall, Electricity/Water, Temples, and Busfacilities.

We are Promoter and Builders of many Residential Projects & Townships in & around Jaipur. We are having a great sales & construction track record in Jaipur having clients from All over India. We are also having many NRI Clients from US/UK & Canada.

PAL REAL GROUP the largest developer of Jaipur is the trendsetter and pioneer in the concept of private colonies and townships in Jaipur. All the projects undertaken by the company are planned in such a way so as to fulfill both the current as well as the future requirements of the customers in terms of housing, commercial & farm Houses along with the amenities that are required to make these projects successful. Moreover, all our colonies are designed on such a location from where local transport is easily available. Besides all comforts of modern-day we always try to provide best home, Land, Commercial Spaces in your budget and on good location as well. We have hundreds of satisfied customers in our database and their satisfaction makes us more sound and capable to provide more best living options for you.



# What can match the superiority of a legacy?

---

Land created by the trusted land developer PAL Real Group is not merely another investment. It's an investment that, unlike most assets in the fluctuating volatile markets, is backed by research and sound growth factors that assure great gains. A key asset that opens the door to success, not just for a day but for generations.



\*Images and pictures are conceptual and actual can be differ from these images\*

# Jewar Airport

The Jewar International Airport is an upcoming international airport to be constructed in Jewar (55 minutes from South Delhi) in Gautam Budh Nagar district of Uttar Pradesh. It is well connected with cities Delhi, Agra, Bulandshahr, Greater Noida, Aligarh and Palwal. In May 2017, the airport was granted approval by the union government cabinet as the second airport for the NCR. The construction of Airport will start from October 2018 and the first 2 runways will be ready by year 2022.



\*Images and pictures are conceptual and actual can be differ from these images\*



## Nearby

- ✓ Jewar Airport
- ✓ Yamuna Expressway
- ✓ Proposed Cantonment Area
- ✓ Proposed Delhi Mumbai Expressway
- ✓ Proposed Film City

## Project Highlights

 24/7 Security

 Park Area

 Temple Area

## Project Features

 Gated Township

 Wide Internal Road

 Electric Pole



# Recent Media Cut-Out

**Jewar airport will now be a full-fledged aviation hub**  
To Have 4 Runways, Flying and Training Institutes

**CM to unveil 7,500cr projects in Yamuna Expressway**

**UP signs pact with LAVA for plant along Yamuna e-way**

**Foundation laid for Baba Ramdev's Patanjali Ayurved at Yamuna Exp.**

**Centre Govt. sanctions ₹2000 Cr. to UP Govt. for Jewar Airport.**

## NCR'S SECOND AIRPORT

What PricewaterhouseCoopers feasibility report says

Jewar airport expected to start operations in 2022-23 with **6.2 million passengers annually**



Within the first 10 years of operation, the number of passengers is **projected to touch 39 million**

Study conducted across 42 districts in multiple states

## Govt paves way for 1st phase of Greater Noida airport

Acquisition Of 1,000 Hectares To Start Soon

Vandana, Keeloor  
@timesgroup.com

Greater Noida/New Delhi: The National Capital Region could get its second airport, in

**FULL COVERAGE: P 2**

Jewar, in five years. "In principle clearance" has been granted," civil aviation minister Ashok Gajapathi Raju said at a press conference on Saturday, paving the way for acquiring 1,000 hectares (around 2,500 acres) for the first phase. The

**PHASE 1: IN 5 YEARS 1 runway & terminal**

Area: 1,000 hectare

Cost: Rs 10,000 cr

Road, rail & metro connectivity



**FINAL PLAN: 10-15 YEARS 4 runways**

Area: 3,000 hectare

Cost: Rs 15,000-20,000 cr

Capacity: 30-50 million passengers a year



airport could be ready by 2022, minister of state for civil aviation Jayant Sinha told TOI.

The Yamuna Expressway Industrial Development Authority (YEIDA) has notified 3,000 hectares in Jewar for the airport, with the first phase

estimated to cost around Rs 10,000 crore.

This will include one runway, a terminal and other infrastructure, with the airport to be connected by road, rail and through a Metro link, Sinha said, adding that connect-

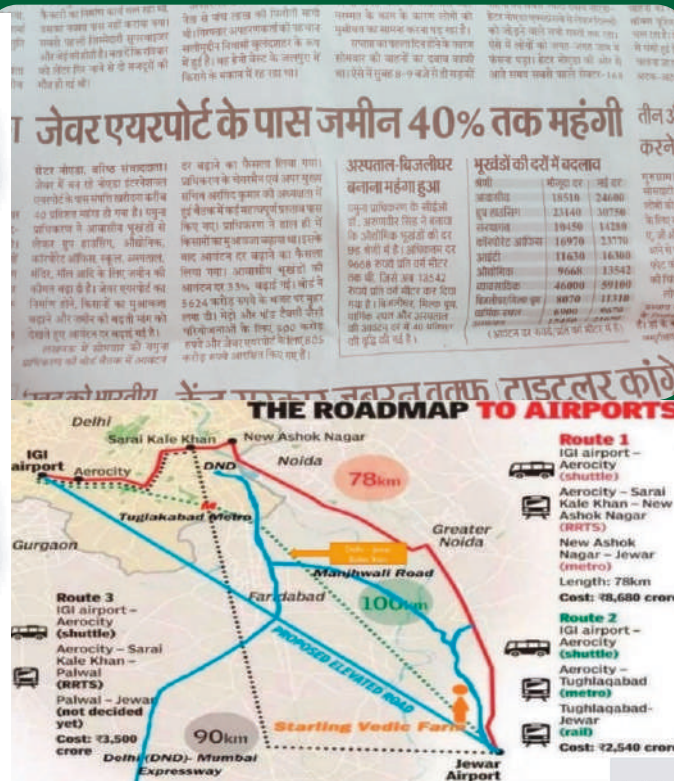
ivity with Meerut and other parts of the state will be upgraded. The plan is to add three more runways with the total cost estimated between Rs 15,000 crore and Rs 20,000 crore.

**► Concessionaire deal, P 7**

# Recent Media Cut-Out

**Greater Noida Airport foundation stone to be laid by Oct : Government**

**Government sets up project monitoring panel to expedite Jewar airport**



\*Images and pictures are conceptual and actual can be differ from these images\*



# Current Location & Upcoming Developments Cont...

<b>Sector - 21</b> <b>FILM CITY</b> 1000 Acres Approx.	<b>Sector - 22B,D,E,F</b> PATANJALI RESIDENTIAL OLYMPIC VILLAGE
<b>Sector - 23C</b> <b>ISBT</b>	<b>Sector - 24 , A</b> PATANJALI HALDIRAM LAVA & VIVO
<b>Sector - 33</b> TOY CITY TRANSPORT NAGAR	<b>Sector - 29</b> APPAREL PARK TEXTILE PARK MSME
<b>Sector - 31</b> <b>ATS</b>	<b>Sector - 32</b> METRO COACH FACTORY AVERY DENNISON
<b>Sector - 28</b> MEDICAL DEVICE PARK FURNITURE HUB SIFY DATA CENTER	



**JEWAR  
AIRPORT**  
Nearby



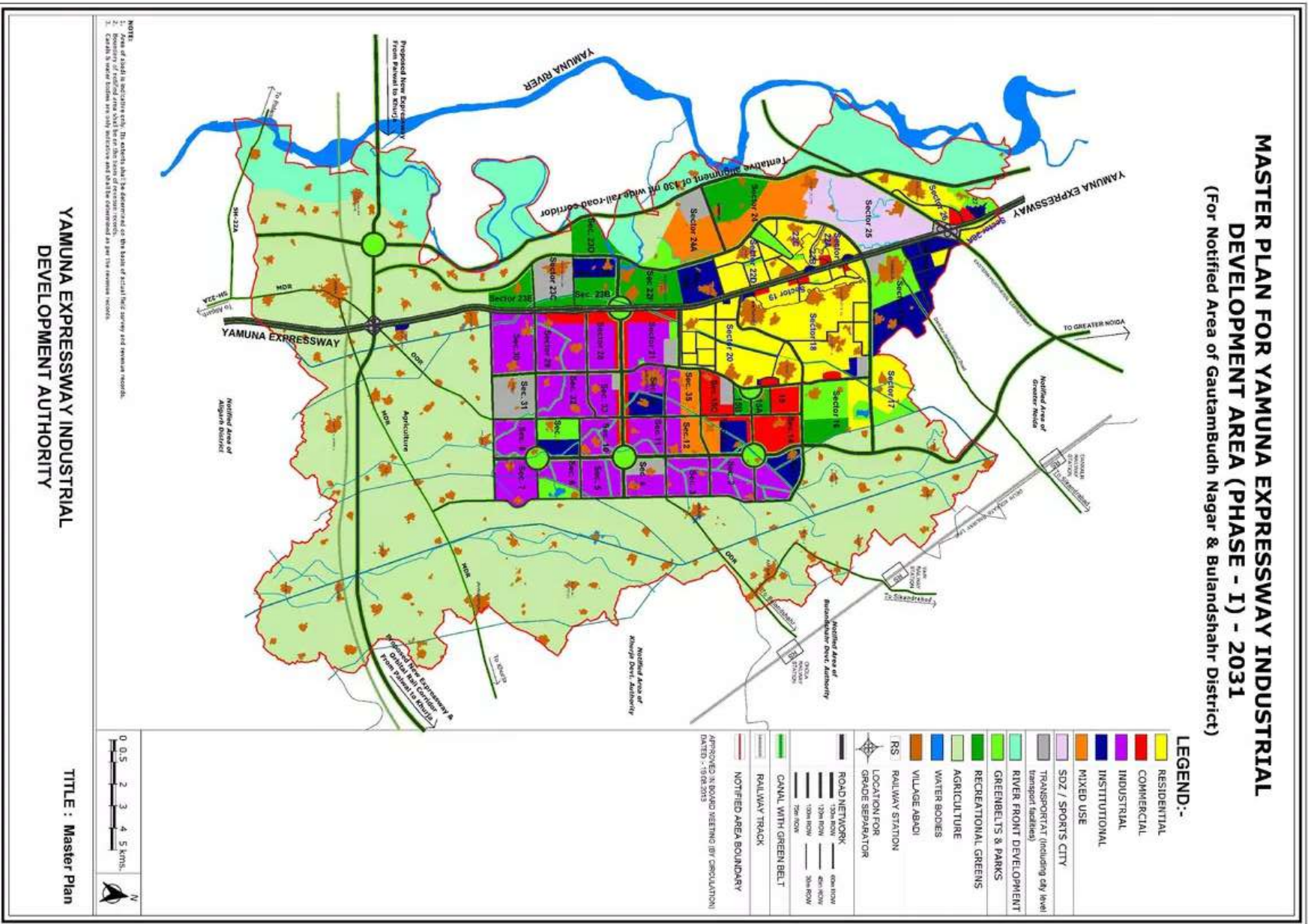
**PROPOSED  
DELHI MUMBAI  
EXPRESSWAY**  
Nearby



**PROPOSED  
FILM CITY**  
Nearby

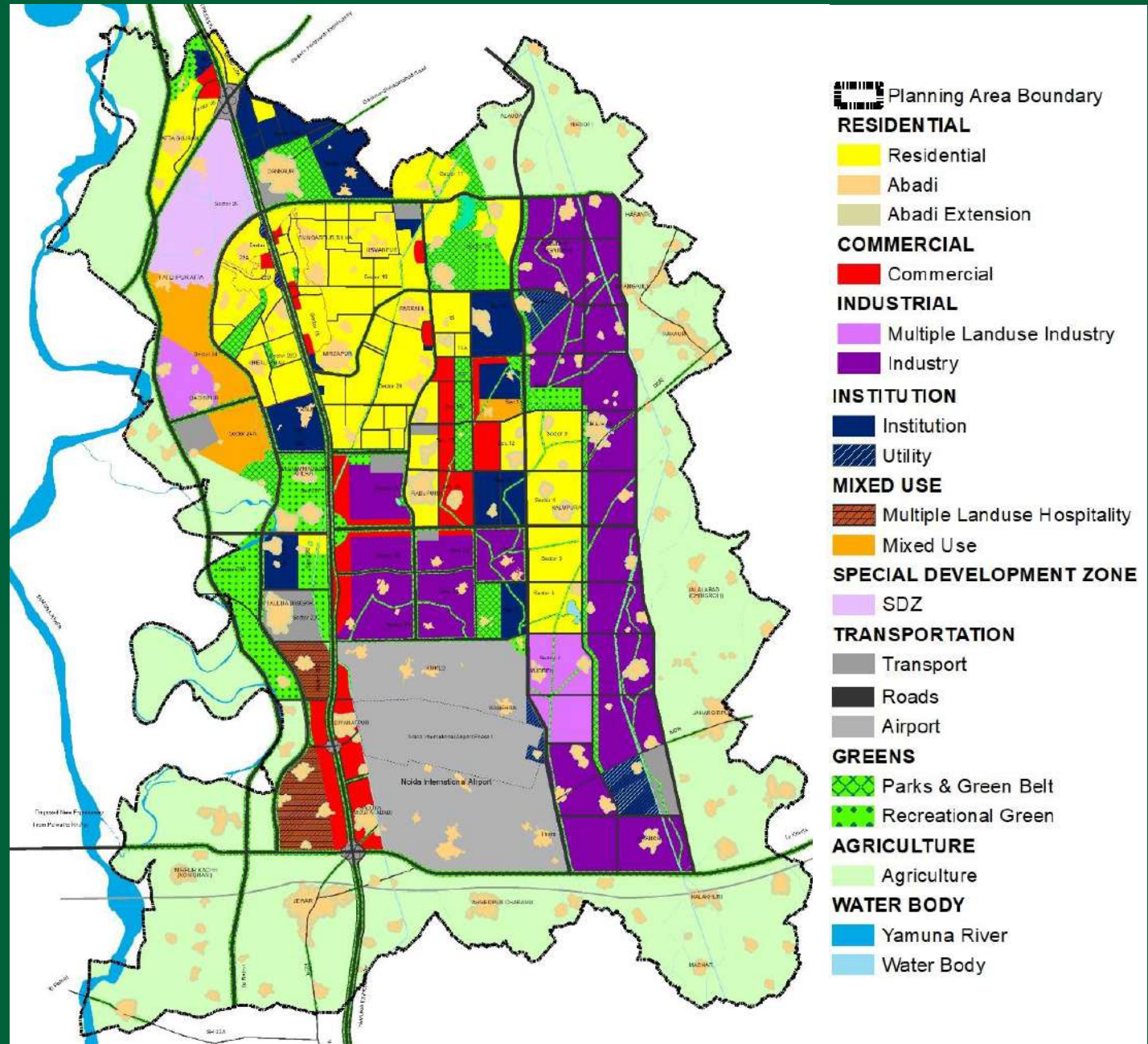
\*Images and pictures are conceptual and actual can be differ from these images\*

# Master Plan Yamuna Expressway-2031





# Master Plan Yamuna Expressway-2041



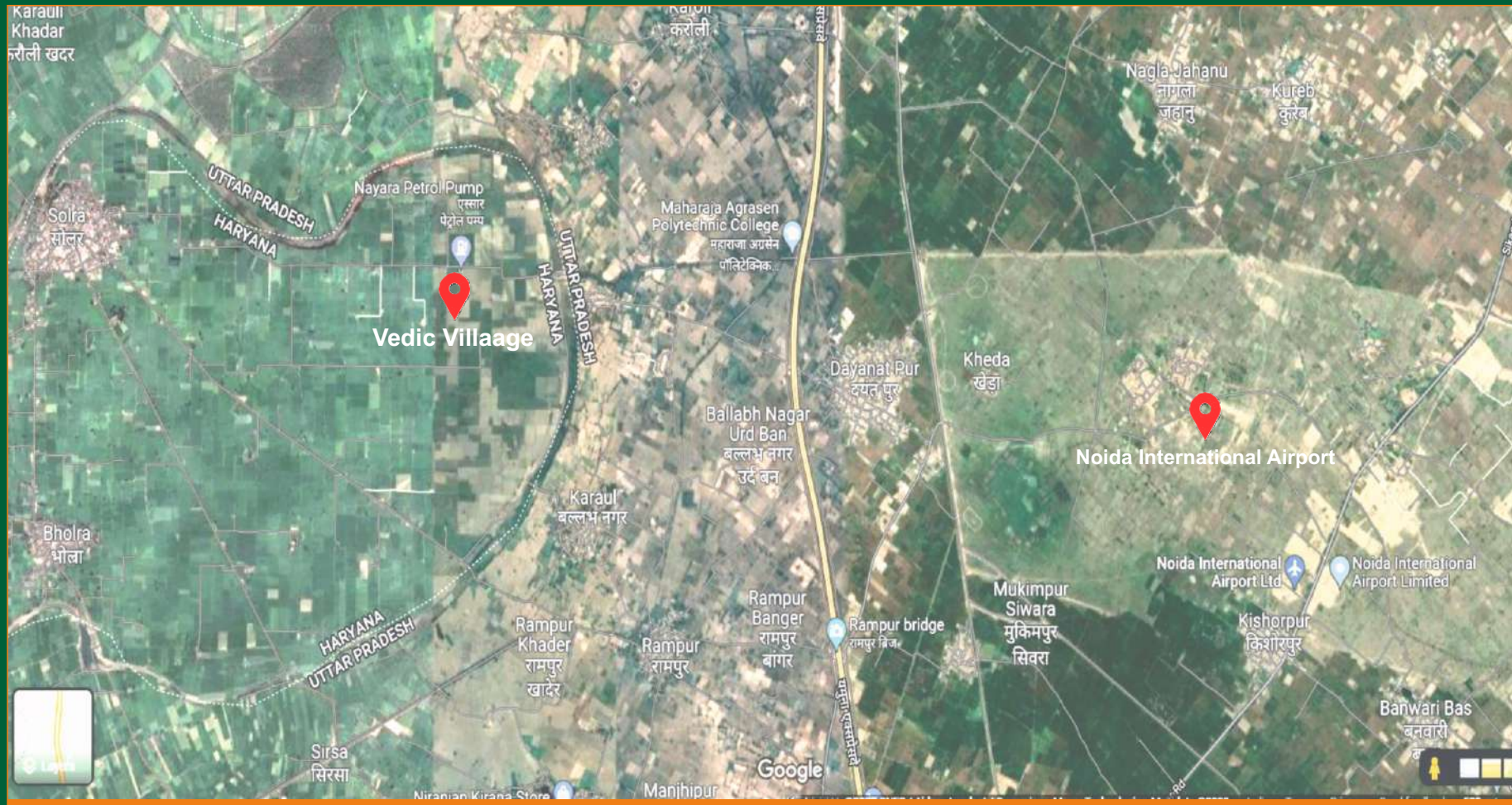
# Many Reason TO Invest In वैदिक *Villaage*

DISCOVER THE SERENITY OF VANDIK LIVING

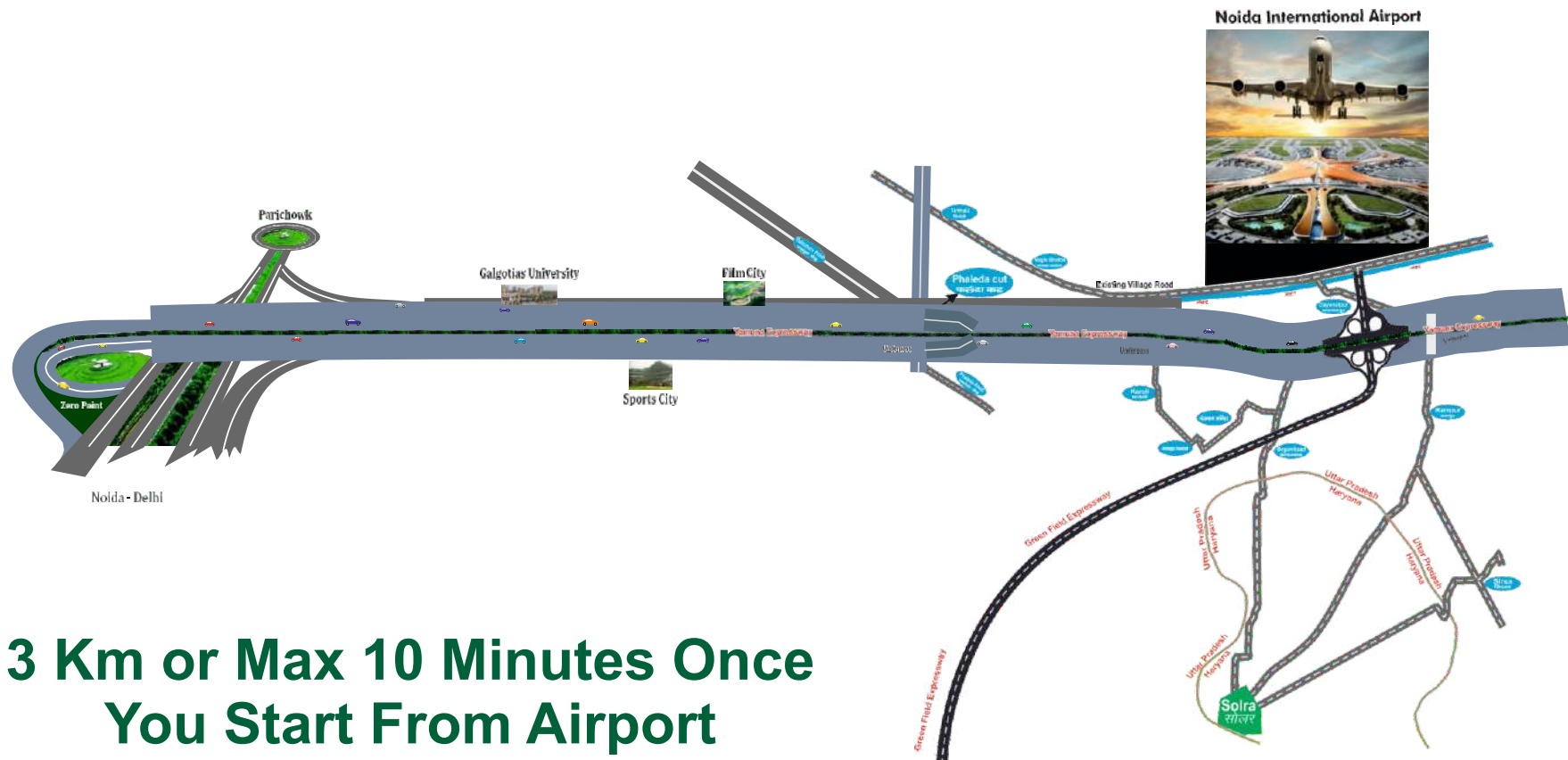




# Change of The Flow of River Has Created A Unique Opportunity

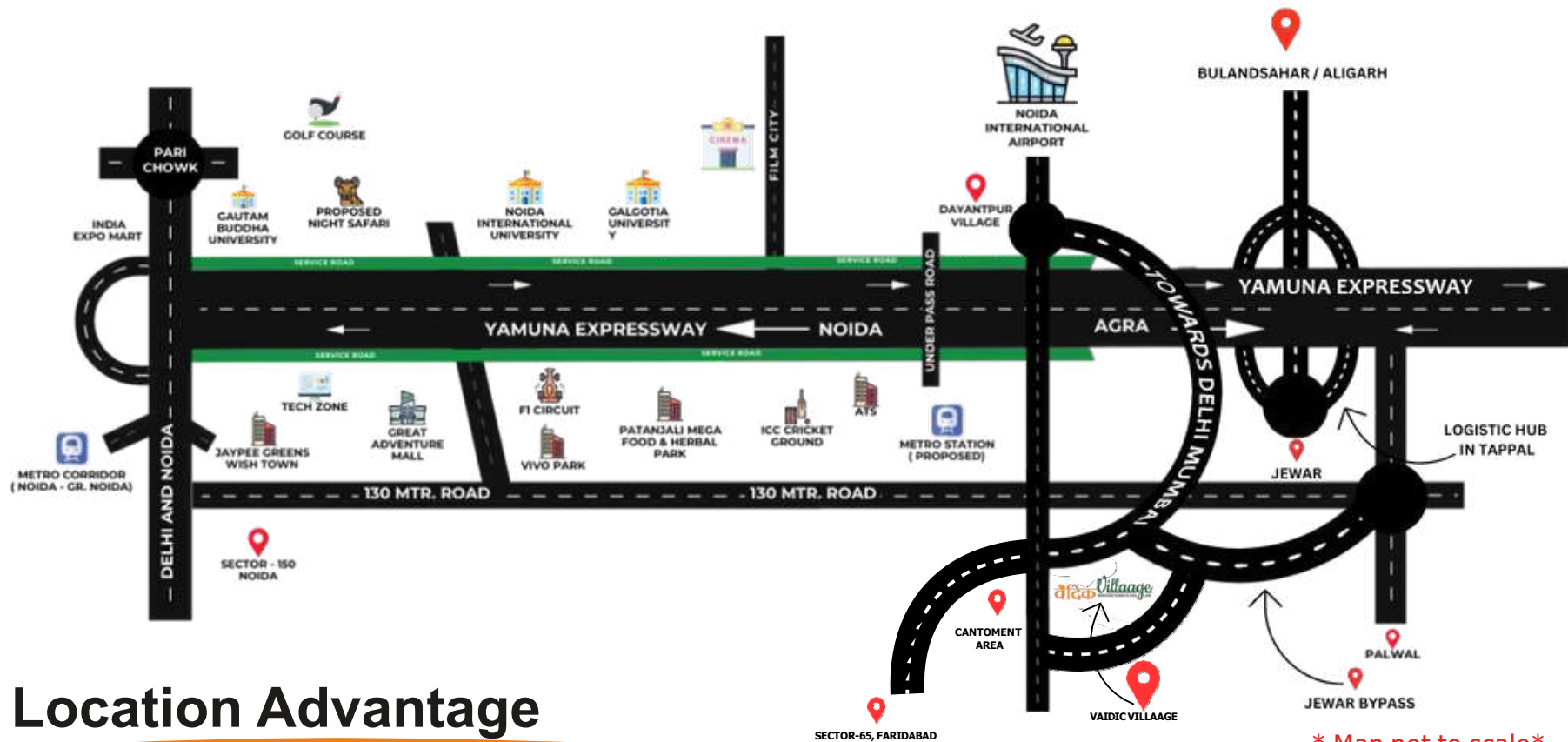


# Why Price of This Precious Land Will Increase Faster?









## Location Advantage

### Nearby

Proposed Noida International Airport  
 Proposed POD Taxi Station  
 Proposed ISBT, Jewar  
 Proposed Metro Station  
 Proposed Film City  
 Proposed YEIDA Industrial & Residential Sectors  
 Proposed 130 MTR YEIDA Sectors Road Just 800 MTR.  
 Proposed 110 MTR. DMIC Road



### Head Office

H-214 3rd Floor Sec-63  
 Noida, UP- 201301



www.palrealgroup.com



info@palrealgroup.com